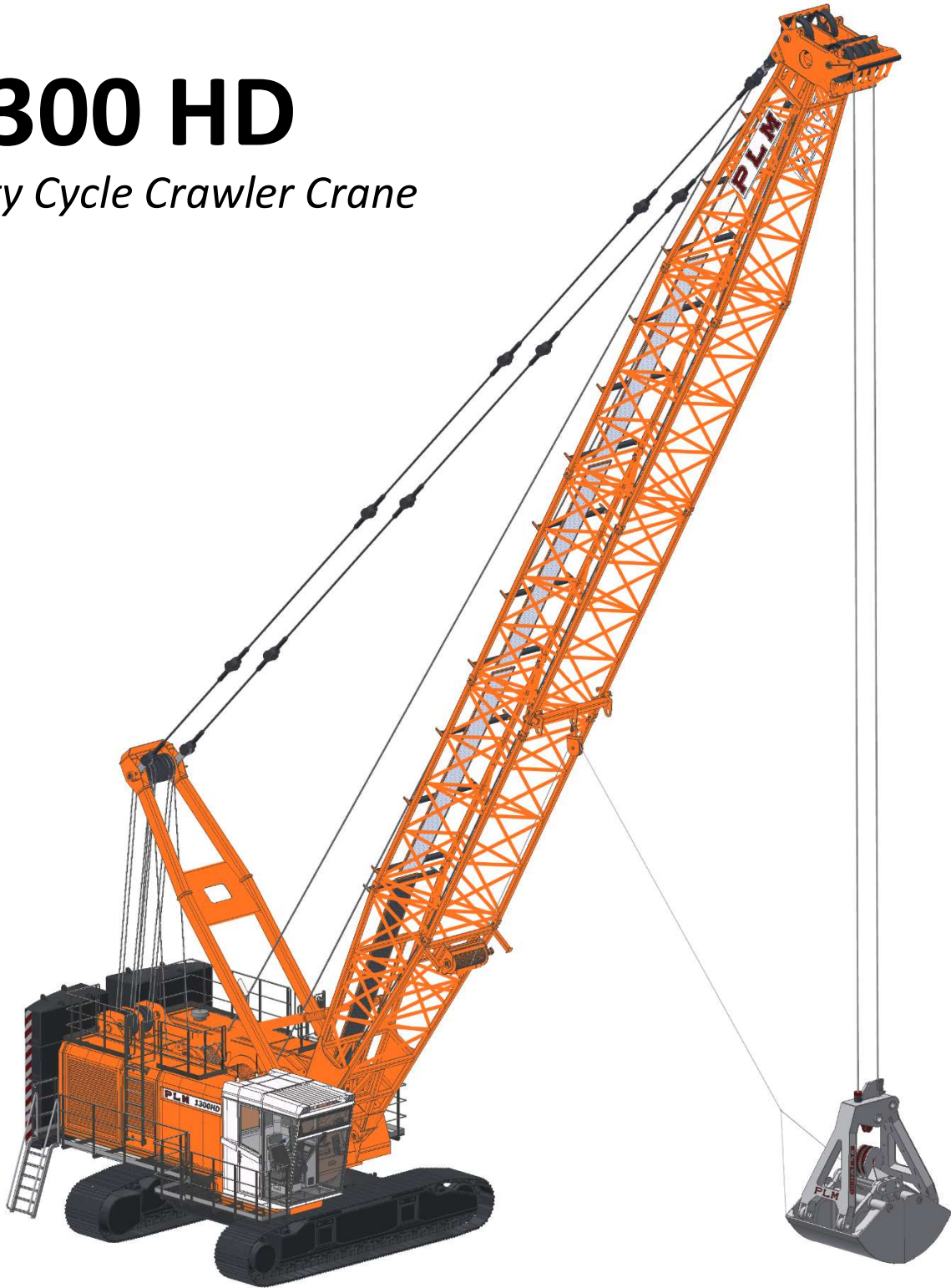


# 1300 HD

*Duty Cycle Crawler Crane*



# General

The PLM 1300 HD is a Heavy Duty 130 ton-class crawler crane in the PLM Duty Cycle Crawler Crane Line, other cranes in this line are:

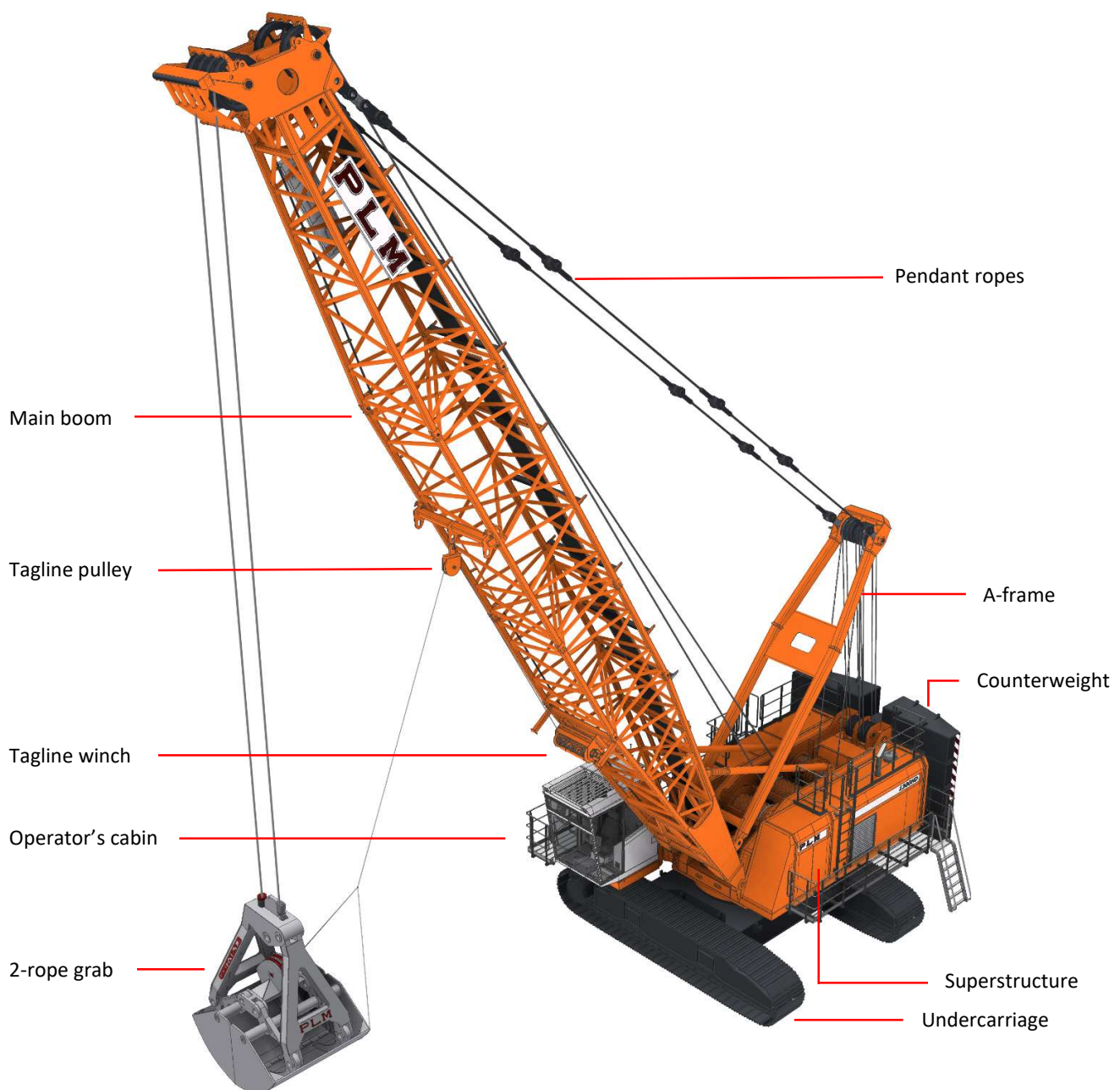
PLM 1000 HD (100 tons)

PLM 2000 HD (200 tons)

PLM 3000 HD (300 tons)

All HD cranes are designed for continuous duty cycle operation such as dredging, transshipping, drop ball operation, dragline operation and dynamic compaction in combination with high performance lifting capabilities.

PLM cranes are designed with operators comfort, reliability and a long length of life as primary considerations. They can withstand heavy duty clamshell or hoisting work in continuous operation in a harsh environment.



# Technical



## Diesel Engine

|              |   |                        |            |
|--------------|---|------------------------|------------|
| Make         | : | Caterpillar            |            |
| Type         | : | C18 ACERT              |            |
| Power        | : | 755 bhp (C-rating)     | 563 bkW    |
| Revolutions  | : | 1800 rpm               |            |
| Cylinders    | : | In-line 6              |            |
| Displacement | : | 1104.5 in <sup>3</sup> | 18.1 liter |
| Emission     | : | EPA Tier 4 final       |            |
| Battery      | : | 24 Volt                |            |
| Fuel tank    | : | 296 US-gallon          | 1120 liter |

The Caterpillar C18 meets the EPA Tier 4 final emission standard for non-road engines without the use of AdBlue. Depending on the type of operation the RPM's of the diesel engine can be adjusted to optimize fuel consumption and reduce noise emission. The fuel system is equipped with a water separator, primary and secondary fuel filters for reliable operation. A fuel gauge and low fuel level alarm are integrated on the crane information display mounted in the operators cabin.



## Hydraulics

|                        |   |  |             |
|------------------------|---|--|-------------|
| System                 | : | Closed loop circuit, every main function has its own pump(s) |             |
| System volume          | : | 265 US-gallon  | 1000 liters |
| Working pressure, max. | : | 5500 psi   | 380 bar     |
| Grab holding winch     | : | 169 gpm  | 639 l/min   |
| Grab closing winch     | : | 169 gpm  | 639 l/min   |
| Boom hoist winch       | : | 108 gpm  | 410 l/min   |
| Slewing gear(s)        | : | 108 gpm  | 410 l/min   |

The closed loop system enables smooth and precise control in both directions. All hydraulic axial piston pumps are connected to a 4-point pump splitter box that is mounted to the fly(wheel) housing of the diesel engine with flexible coupling. Extensive filtering is provided throughout the system on both the high pressure and low pressure side. Standard equipment includes a high-capacity oil cooler for operation in high ambient temperatures. Pressure cut-offs are utilized to protect the pumps and motors. Pressure switches will shut down the system automatically in case of a hose burst.



## Slewing

|               |   |                         |          |
|---------------|---|-------------------------|----------|
| Diameter      | : | 97"                     | Ø2460 mm |
| Type          | : | 3-row roller bearing    |          |
| Gearing       | : | Internal                |          |
| Type          | : | Planetary               |          |
| Quantity      | : | 2                       |          |
| Motor         | : | Hydraulic, axial piston |          |
| Slewing Speed | : | 0-3,8 rpm               |          |

The large diameter slew bearing has internal gearing for protection of the teeth in combination with two slewing gears. The slewing speed can be proportionally adjusted. Slewing control has 3 settings, 25, 50 or 100 % of the slewing speed over the whole range of the joystick. The maximum slewing torque is available in all 3 settings.

# Technical

## Winches

The PLM 1300 HD in 2-rope configuration is standard equipped with the following 4 winches;

### Grab Holding winch

|                         |   |   |                |
|-------------------------|---|---|----------------|
| Type                    | : | standard (controlled freefall as an option) |                |
| Line pull               | : | 66,000 lbs (33 tons)                        | 30.000 kg      |
| Number of layers        | : | 3   |                |
| Wire rope diameter      | : | 1x 1-1/2"                                   | Ø38 mm         |
| Drum size               | : | Ø30.7 x 43.3"                               | Ø780 x 1100 mm |
| Rope storage (3 layers) | : | 715 ft.                                     | 218 meter      |
| First layer capacity    | : | 200 ft.                                     | 62 meter       |
| Line speed              | : | 0-308 ft/min                                | 0-94 m/min     |

### Grab Closing winch

|                         |   |   |                |
|-------------------------|---|---|----------------|
| Type                    | : | standard (controlled freefall as an option) |                |
| Line pull               | : | 66,000 lbs (33 tons)                        | 30.000 kg      |
| Number of layers        | : | 3   |                |
| Wire rope diameter      | : | 1x 1-1/2"                                   | Ø38 mm         |
| Drum size               | : | Ø30.7 x 43.3"                               | Ø780 x 1100 mm |
| Rope storage (3 layers) | : | 715 ft.                                     | 218 meter      |
| First layer capacity    | : | 200 ft.                                     | 62 meter       |
| Line speed              | : | 0-308 ft/min                                | 0-94 m/min     |

### Boom Hoist winch

|                         |   |                                 |                |
|-------------------------|---|---------------------------------|----------------|
| Type                    | : | standard                        |                |
| Line pull               | : | 47,400 lbs (23.7 tons)          | 21.500 kg      |
| Number of layers        | : | 2                               |                |
| Wire rope diameter      | : | 2x 1"                           | Ø25.4 mm       |
| Drum size               | : | Ø27.2 x 43.3"                   | Ø690 x 1100 mm |
| Rope storage (2 layers) | : | 2x 210 ft.                      | 2x 64 meter    |
| Line speed              | : | 2x 154 ft/min                   | 2x 47 m/min    |
| Boom hoist speed        | : | 49 seconds, 15-84° (boom angle) |                |

Grab and boom hoist winches are controlled winches with planetary gearbox and enclosed multiple discs parking brakes between the motor and the gearbox. The grab winches have a single wire per drum for 2-rope mechanical grabs. For dragline operation the holding winch functions as a drag winch. For dragline and hoist operation the closing winch functions a hoist winch. The line speed is continuously variable. During grab operation up to a dredging depth of -100 ft. (-30 m) only the first layer of the grab drums is used for a longer length of life of the wires.

### Tagline winch

|                         |   |                      |               |
|-------------------------|---|----------------------|---------------|
| Type                    | : | standard             |               |
| Line pull               | : | 6,600 lbs (3.3 tons) | 3.000 kg      |
| Number of layers        | : | 1                    |               |
| Wire rope diameter      | : | 1x 3/4"              | Ø19 mm        |
| Drum size               | : | Ø16.5 x 36"          | Ø420 x 905 mm |
| Rope storage (2 layers) | : | 173 ft.              | 52.8 meter    |
| Line speed              | : | 400 ft/min           | 120 m/min     |

The line pull of the tagline can be adjusted from the operators cabin depending on the size of grab or type of operation. The winch can be operated as a constant tension winch or standard winch with a line pull of 6,600 lbs.

# Technical

## Crawlers

|                   |   |                         |             |
|-------------------|---|-------------------------|-------------|
| Crawler size      | : | B8                      |             |
| Track gauge       | : | 15' 1"                  | 4.600 mm    |
| Width over tracks | : | 18' 4"                  | 5.600 mm    |
| Crawler length    | : | 23'                     | 7.000 mm    |
| Track shoe type   | : | triple grouser          |             |
| Track shoe width  | : | 3' 3"                   | 1.000 mm    |
| Track frames      | : | non extendible          |             |
| Travel speed      | : | 0.80 mph                | 1.3 km/hour |
| Pedestal height   | : | 4' 8"                   | 1.420 mm    |
| Final drives      | : | 2                       |             |
| Type              | : | planetary 250,000 ft-lb | 340.000 Nm  |
| Motor             | : | hydraulic, axial piston |             |

*The planetary final drives with axial piston motors are each driven by a separate pump. Generating maximum torque for each track individually enabling simultaneously operation of both tracks while steering.*

### Features:

- Audible alarm while travelling
- Life time sealed oil filled track chain and rollers
- Hydraulic (grease) tensioner on idler



## Crane Control

*The PLM 1300 HD has an electronic crane control and steering system operated by two electronic joysticks. The joysticks are mounted in consoles on both sides of the multiple adjustable operator's chair. Each joystick has 4 push buttons for various crane functions*

|                |   |                             |
|----------------|---|-----------------------------|
| Control        | : | European                    |
| Left Joystick  | : | Boom Hoist - Slewing        |
| Right Joystick | : | Grab Holding – Grab Closing |

*In crane travel mode both joysticks are used to control the tracks.*

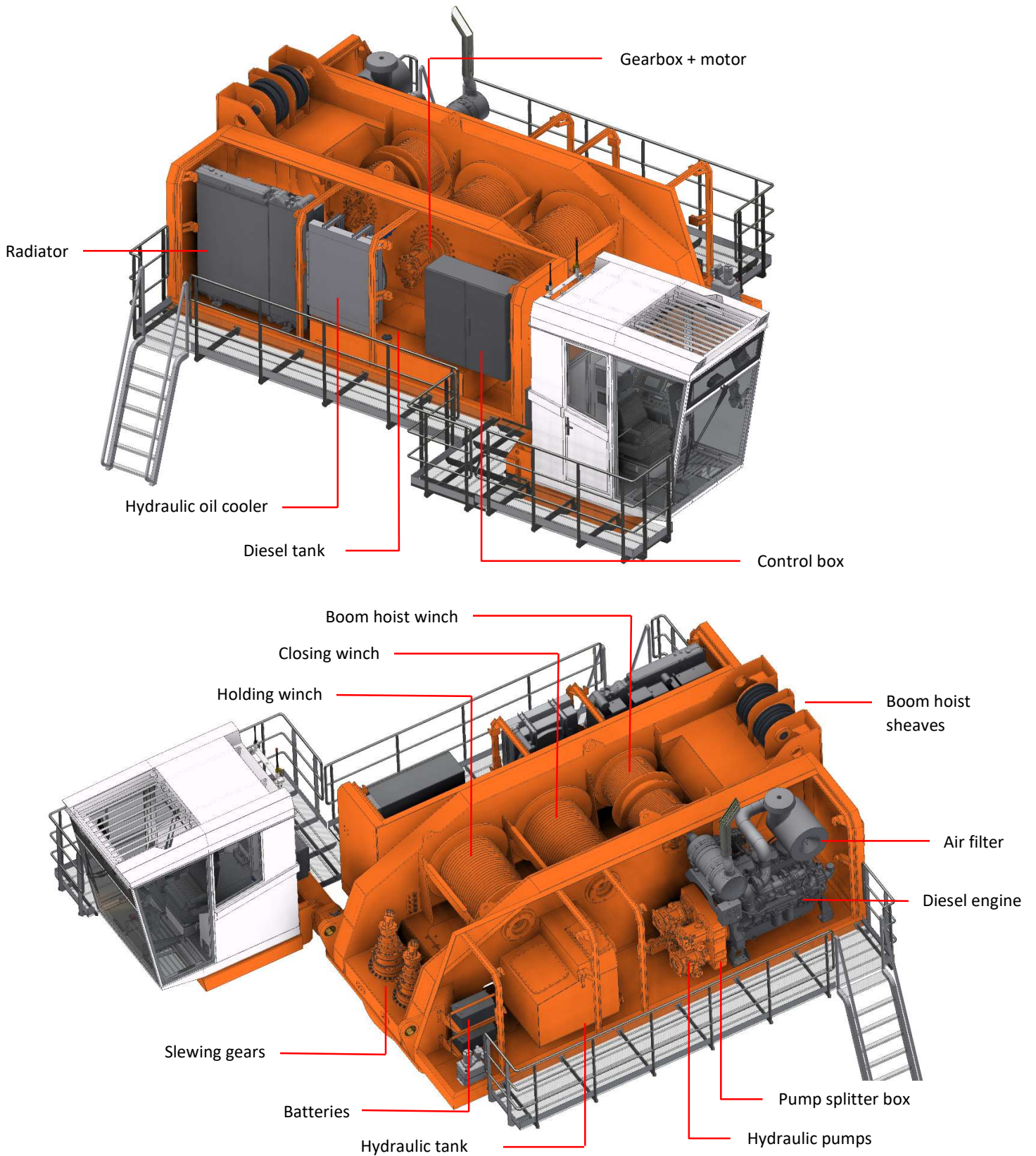
*The proportional electronic hydraulic control and PLM Power Management guarantees smooth operation and allows to operate all crane functions simultaneously.*

*The crane information touch screen mounted in the cabin informs the operator about the status of various components of the crane, for example fuel level, hydraulic oil temperature, diesel engine performance, operating hours etc. The LMI system readout is integrated into the screen (actual load / working radius, percentage of maximum load) and system alarm(s) can be seen.*

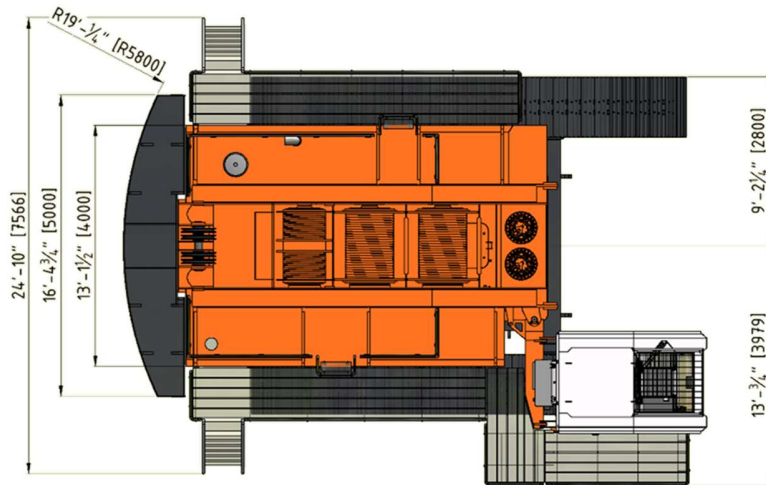
*Crane load data from the LMI are logged. The crane is equipped with a modem for remote troubleshooting assistance.*

*PLM Grab Management feature is installed for dredging and transshipment operation in grab mode. This feature includes slack wire control, adjustable digging torque and semi-automatic operation along with other features.*

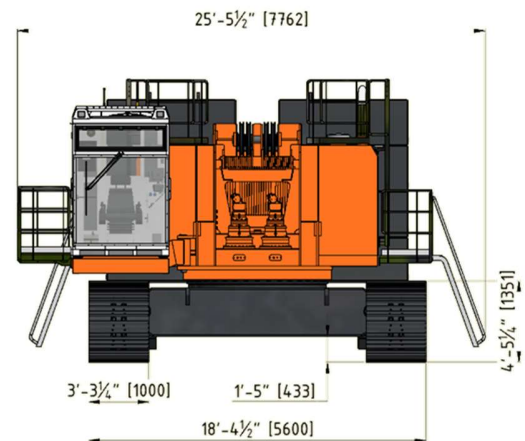
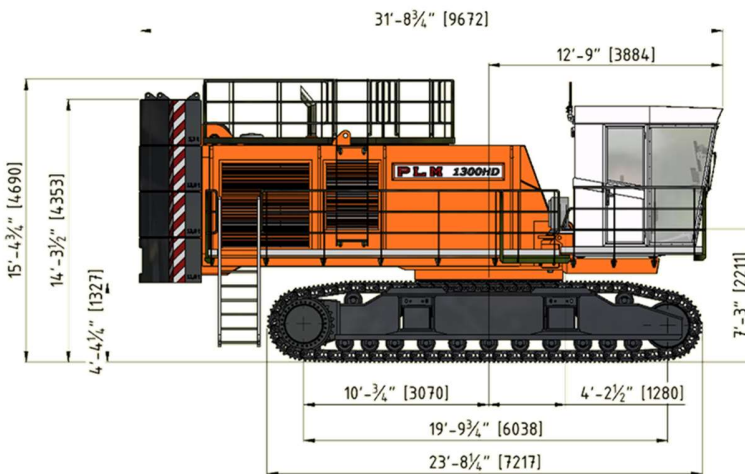
# Machinery



# Dimensions



Units: ft. [mm]



## Operational Weight

The operational weight is based on basic machine with: triple grouser tracks, 78,050 lbs (39 tons) counterweight, 66 ft (20 m) boom, wire ropes and WLL 352,700 lbs (176 tons) hook block

Weight, approx. : 286,600 lbs 130.000 kg

The maximum weight is based on basic machine with : triple grouser tracks, 101,400 lbs (46 tons) counterweight, 174 ft. (53 m) boom, wire ropes and WLL 176,400 lbs (88 tons) hook block, 17,600 lbs carbody counterweight

Weight, approx. : 342,800 lbs 155.500 kg

## Ground Pressure

Ground surface pressure\* : 15.22 psi  
1.07 kg/cm<sup>2</sup>

\*based on basic machine without load as above

## Design

- The crane has been designed according to :  
EN 474-12 (Grab mode)  
EN 13000 (Hoist mode)

- Charts are based on the machine standing on firm level ground
- Weight of the lifting devices (blocks, slings) and grab are part of the load shown in the charts

## Configuration

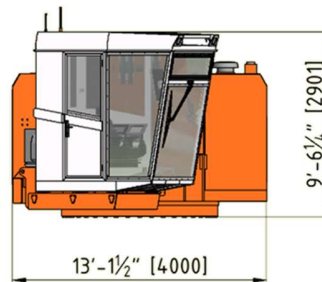
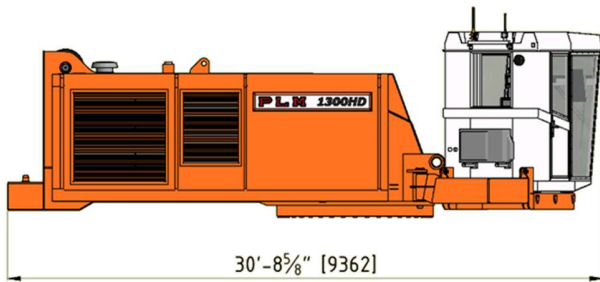
Max. boom length : 174 ft. 53 m

Standard winches for grab and hoist mode

For dropball and dragline operation fairlead and (controlled) freefall winches are optional available.

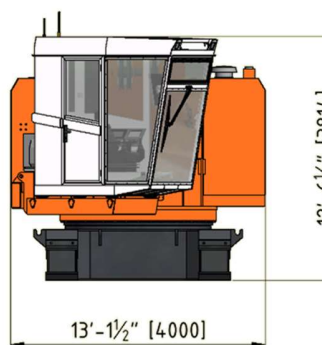
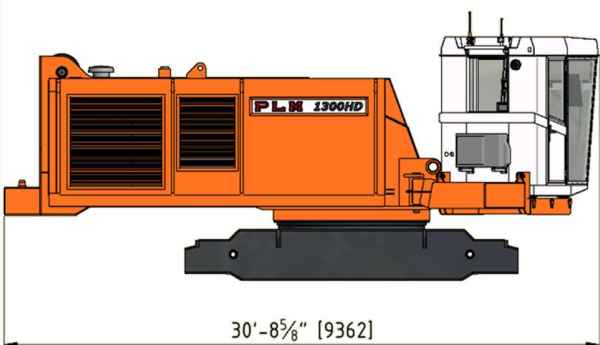
# Transport

## Superstructure



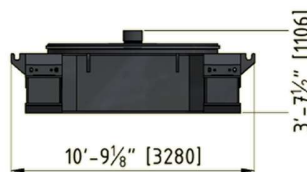
Length : 30'-8<sup>5</sup>/<sub>8</sub>" / 9.362 mm  
 Width : 13'-1<sup>1</sup>/<sub>2</sub>" / 4.000 mm  
 Height : 9'-6<sup>1</sup>/<sub>4</sub>" / 2.901 mm  
 Weight : 77,160 lbs  
 35.000 kg  
 Qty : 1x

## Basic Machine (Carbody + Superstructure)



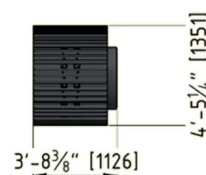
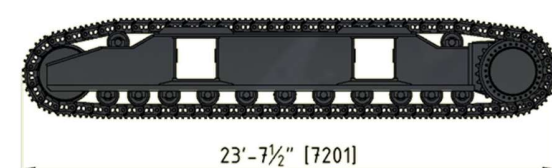
Length : 30'-8<sup>5</sup>/<sub>8</sub>" / 9.362 mm  
 Width : 13'-1<sup>1</sup>/<sub>2</sub>" / 4.000 mm  
 Height : 12'-6<sup>5</sup>/<sub>8</sub>" / 3.814 mm  
 Weight : 103,620 lbs  
 47.000 kg  
 Qty : 1x

## Carbody



Length : 17'-1<sup>7</sup>/<sub>8</sub>" / 5.230 mm  
 Width : 10'-9<sup>5</sup>/<sub>8</sub>" / 3.280 mm  
 Height : 3'-7<sup>1</sup>/<sub>2</sub>" / 1.106 mm  
 Weight : 26,450 lbs  
 12.000 kg  
 Qty : 1x

## Crawlers



Length : 23'-7<sup>1</sup>/<sub>2</sub>" / 7.201 mm  
 Width : 3'-8<sup>3</sup>/<sub>8</sub>" / 1.126 mm  
 Height : 4'-5<sup>1</sup>/<sub>4</sub>" / 1.351 mm  
 Weight : 36,380 lbs  
 16.500 kg  
 Qty : 2x

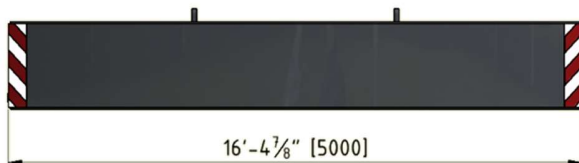
# Transport

## Counterweight - A



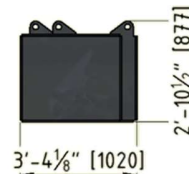
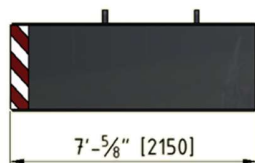
Length : 16'-4<sup>7</sup>/<sub>8</sub>" / 5.000 mm  
 Width : 3'-4<sup>5</sup>/<sub>8</sub>" / 1.032 mm  
 Height : 2'-9<sup>5</sup>/<sub>8</sub>" / 885 mm  
 Weight : 24,250 lbs  
           11.000 kg  
 Qty : 1x

## Counterweight - B



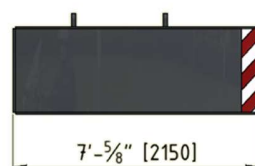
Length : 16'-4<sup>7</sup>/<sub>8</sub>" / 5.000 mm  
 Width : 3'-4<sup>5</sup>/<sub>8</sub>" / 1.032 mm  
 Height : 2'-10<sup>1</sup>/<sub>2</sub>" / 877 mm  
 Weight : 26,455 lbs  
           12.000 kg  
 Qty : 2x

## Counterweight - C



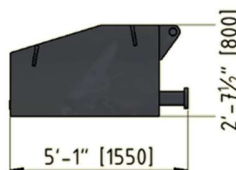
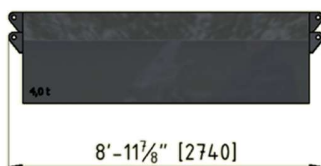
Length : 7'-<sup>5</sup>/<sub>8</sub>" / 2.150 mm  
 Width : 3'-4<sup>1</sup>/<sub>8</sub>" / 1.020 mm  
 Height : 2'-10<sup>1</sup>/<sub>2</sub>" / 877 mm  
 Weight : 11,680 lbs  
           5.300 kg  
 Qty : 1x

## Counterweight - D



Length : 7'-<sup>5</sup>/<sub>8</sub>" / 2.150 mm  
 Width : 3'-4<sup>1</sup>/<sub>8</sub>" / 1.020 mm  
 Height : 2'-10<sup>1</sup>/<sub>2</sub>" / 877 mm  
 Weight : 11,680 lbs  
           5.300 kg  
 Qty : 1x

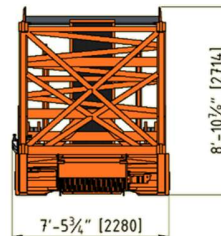
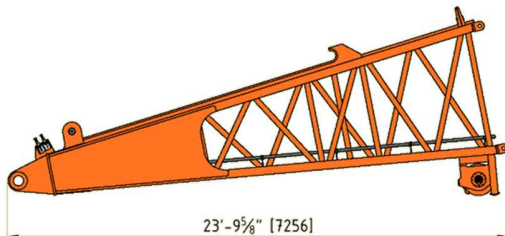
## Counterweight - Carbody



Length : 8'-11<sup>7</sup>/<sub>8</sub>" / 2.740 mm  
 Width : 5'-1" / 1.550 mm  
 Height : 2'-7<sup>1</sup>/<sub>2</sub>" / 800 mm  
 Weight : 8,800 lbs  
           4.000 kg  
 Qty : 2x

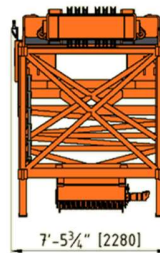
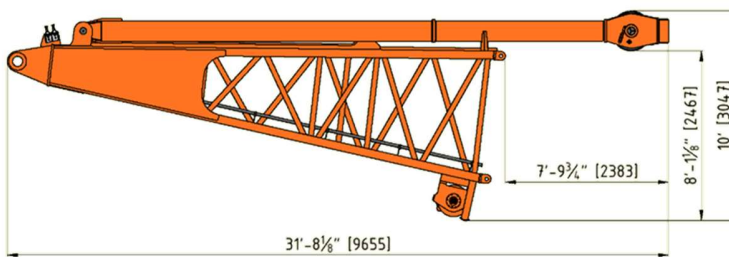
# Transport

## Boom Foot Section



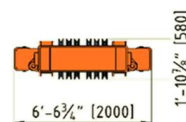
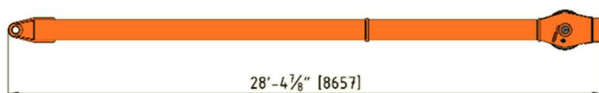
Length : 23'-9<sup>5</sup>/<sub>8</sub>" /7.256 mm  
 Width : 7'-5<sup>3</sup>/<sub>4</sub>" /2.280 mm  
 Height : 8'-10<sup>7</sup>/<sub>8</sub>" /2.714 mm  
 Weight : 10,250 lbs  
           4.650 kg  
 Qty : 1x

## Boom Foot Section with A-frame



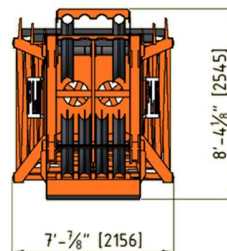
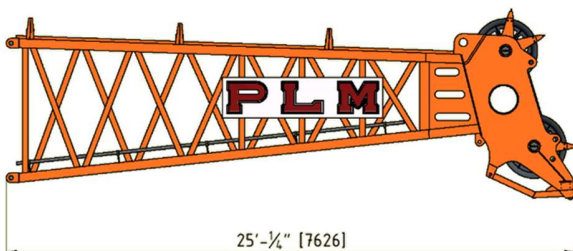
Length : 31'-8<sup>1</sup>/<sub>8</sub>" /9.655 mm  
 Width : 7'-5<sup>3</sup>/<sub>4</sub>" /2.280 mm  
 Height : 10' /3.047 mm  
 Weight : 17,120 lbs  
           7.765 kg  
 Qty : 1x

## A-frame



Length : 28'-4<sup>1</sup>/<sub>8</sub>" /8.657 mm  
 Width : 6'-6<sup>3</sup>/<sub>4</sub>" /2.000 mm  
 Height : 1'-10<sup>7</sup>/<sub>8</sub>" / 580 mm  
 Weight : 6,870 lbs  
           3.115 kg  
 Qty : 1x

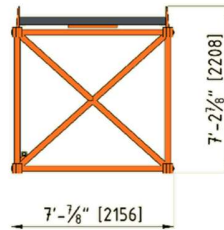
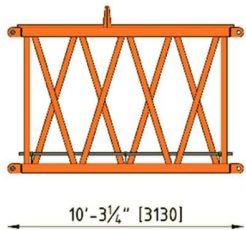
## Boom Head Section (including pendants)



Length : 25'-3/4" /7.626 mm  
 Width : 7'-3/8" /2.156 mm  
 Height : 8'-4<sup>1</sup>/<sub>8</sub>" /2.545 mm  
 Weight : 10,340 lbs  
           4.690 kg  
 Qty : 1x

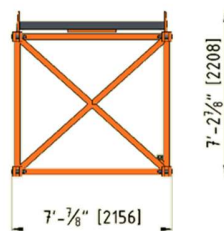
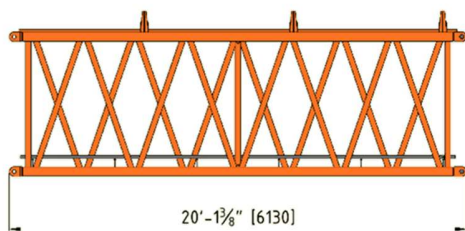
# Transport

## Boom Insert -1 (10 ft. / 3 meter – including pendants)



Length : 10'-3<sup>1</sup>/<sub>4</sub>" /3.130 mm  
 Width : 7'-7<sup>7</sup>/<sub>8</sub>" /2.156 mm  
 Height : 7'-2<sup>7</sup>/<sub>8</sub>" /2.208 mm  
 Weight : 2,440 lbs  
           1.105 kg  
 Qty : 1x

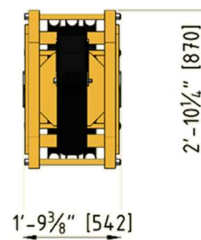
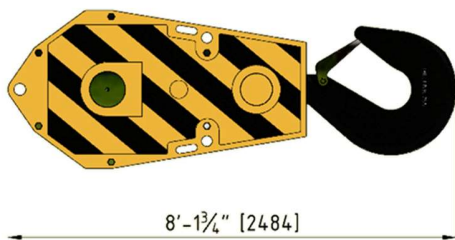
## Boom Insert -2 (20 ft. / 6 meter – including pendants)



Length : 20'-1<sup>3</sup>/<sub>8</sub>" /6.130 mm  
 Width : 7'-7<sup>7</sup>/<sub>8</sub>" /2.156 mm  
 Height : 7'-2<sup>7</sup>/<sub>8</sub>" /2.208 mm  
 Weight : 3,880 lbs  
           1.760 kg  
 Qty : 6x

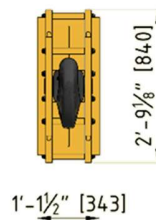
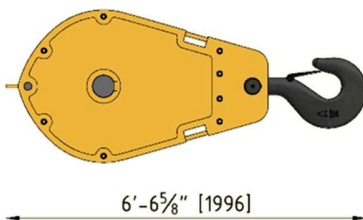
# Transport

## Lifting Block WLL 176 tons (352,700 lbs / 160.000 kg)



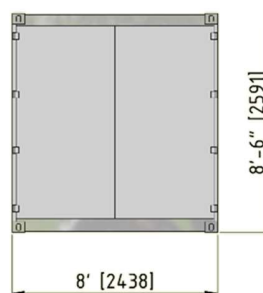
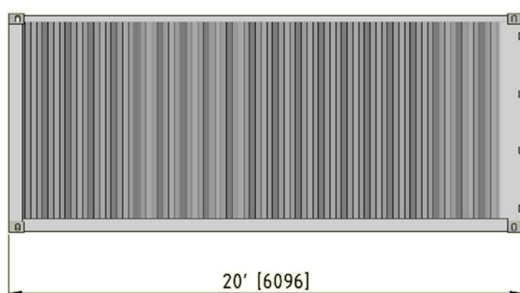
Length : 8'-1 $\frac{3}{4}$ " / 2.484 mm  
 Width : 1'-9 $\frac{3}{8}$ " / 542 mm  
 Height : 2'-10 $\frac{1}{4}$ " / 8.70 mm  
 Weight : 4,630 lbs  
           2.100 kg  
 Qty : 1x

## Lifting Block WLL 55 tons (110,400 lbs / 50.000 kg)



Length : 6'-6 $\frac{5}{8}$ " / 1.996 mm  
 Width : 1'-1 $\frac{1}{2}$ " / 343 mm  
 Height : 2'-9 $\frac{1}{8}$ " / 840 mm  
 Weight : 1,760 lbs  
           800 kg  
 Qty : 1x

## Auxiliary Parts – 20 ft. Container



Length : 20' / 6.096 mm  
 Width : 8' / 2.438 mm  
 Height : 8'-6" / 2.591 mm  
 Weight : 8,820 lbs  
           4.000 kg  
 Qty : 1x

# Application

## Grab Mode



## Hoist Mode



According to EN 474-12  
 Capacities do not exceed 66,6 % of tipping load  
 101,400 lbs (46.000 kg) counterweight  
 0 lbs (0 kg) carbody counterweight  
 Max. capacity mechanical grab 66,000 lbs (30.000 kg)  
 Winch line pull (per winch) 66,000 lbs (30.000 kg)

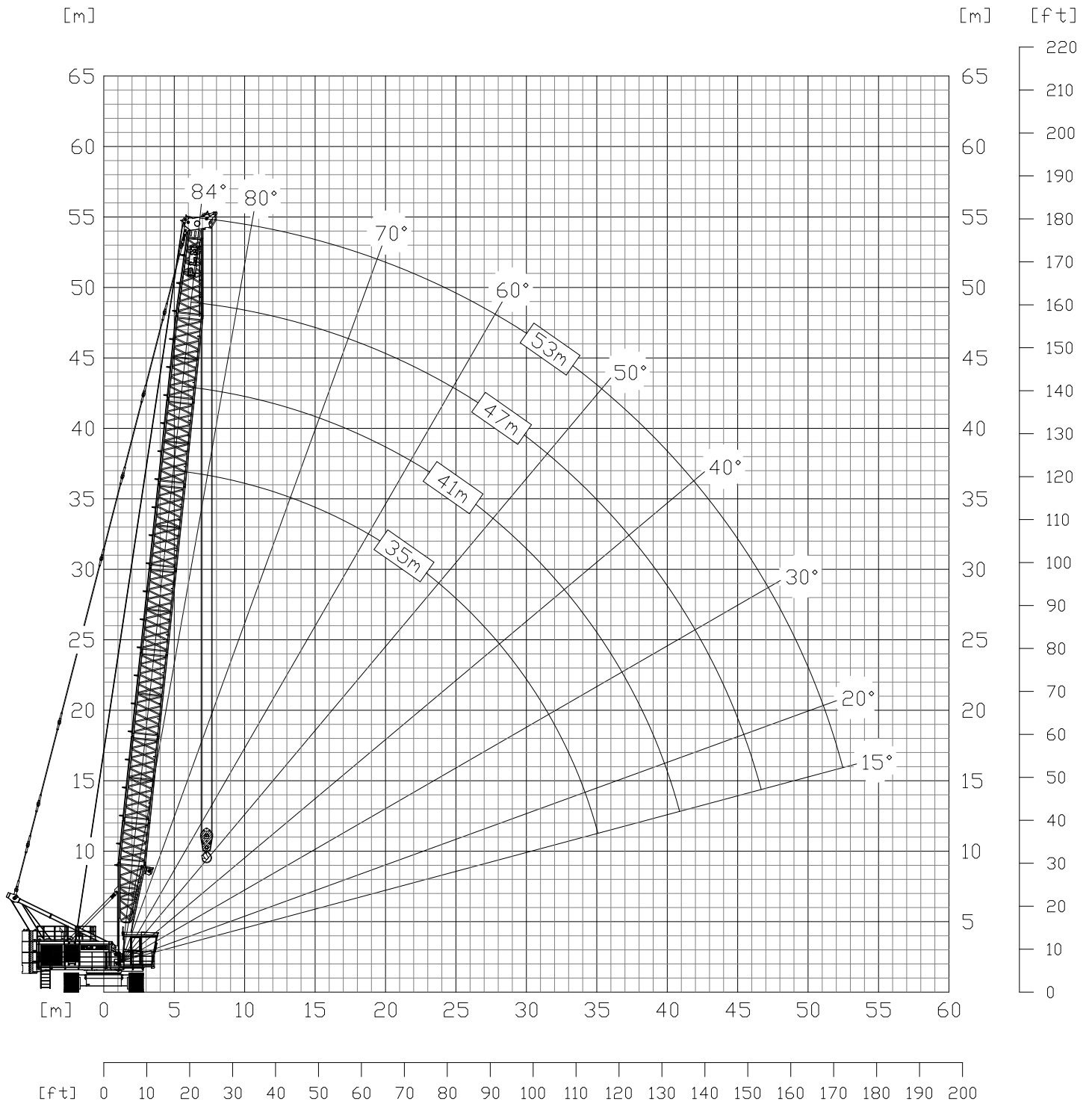
According to NEN-EN 13000 / ISO 4305  
 -  
 101,400 lbs (46.000 kg) counterweight  
 17,600 lbs (8.000 kg) carbody counterweight  
 -  
 Hoist winch line pull 66,000 lbs (30.000 kg)

## Main Boom Configuration

| Boom Section       | Length      |     | Quantity  |           |            |            |            |            |            |            |
|--------------------|-------------|-----|-----------|-----------|------------|------------|------------|------------|------------|------------|
|                    | [ft]        | [m] |           |           |            |            |            |            |            |            |
| Boom foot          | 20          | 7   | 1         | 1         | 1          | 1          | 1          | 1          | 1          | 1          |
| Boom insert 1      | 16          | 3   | -         | -         | -          | 1          | -          | 1          | 1          | 1          |
| Boom insert 2      | 20          | 6   | 1         | 2         | 3          | 3          | 4          | 4          | 5          | 6          |
| Boom head          | 23          | 7   | 1         | 1         | 1          | 1          | 1          | 1          | 1          | 1          |
| <b>Boom Length</b> | <b>[ft]</b> |     | <b>66</b> | <b>85</b> | <b>105</b> | <b>115</b> | <b>125</b> | <b>135</b> | <b>154</b> | <b>174</b> |
|                    | <b>[m]</b>  |     | <b>20</b> | <b>26</b> | <b>32</b>  | <b>35</b>  | <b>38</b>  | <b>41</b>  | <b>47</b>  | <b>53</b>  |

# Range diagram

## Main Boom – Lifting mode



# Lifting Mode

Capacities according to NEN-EN 13000 / ISO 4305

## 101,400 lbs (46.000 kg) Counterweight – 17,600 lbs (8.000 kg) Carbody Counterweight

| Radius | 115 ft<br>35 m | 135 ft<br>41 m | 154 ft<br>47 m | 174 ft<br>53 m |
|--------|----------------|----------------|----------------|----------------|
|--------|----------------|----------------|----------------|----------------|

| [ft] | [m] | [lbs] | [kg] | [lbs] | [kg] | [lbs] | [kg] | [lbs] | [kg] |
|------|-----|-------|------|-------|------|-------|------|-------|------|
|------|-----|-------|------|-------|------|-------|------|-------|------|

|     |    |         |        |         |        |         |        |        |        |
|-----|----|---------|--------|---------|--------|---------|--------|--------|--------|
| 23  | 7  | 158,700 | 72.000 | 140,400 | 63.700 | -       | -      | -      | -      |
| 26  | 8  | 139,300 | 63.200 | 133,600 | 60.600 | 111,300 | 50.500 | 90,600 | 41.100 |
| 30  | 9  | 124,300 | 56.400 | 119,000 | 54.000 | 108,000 | 49.000 | 88,200 | 40.000 |
| 33  | 10 | 112,400 | 51.000 | 107,400 | 48.700 | 103,200 | 46.800 | 85,500 | 38.800 |
| 36  | 11 | 102,300 | 46.400 | 97,700  | 44.300 | 93,700  | 42.500 | 83,100 | 37.700 |
| 39  | 12 | 91,100  | 41.300 | 89,700  | 40.700 | 86,000  | 39.000 | 80,700 | 36.600 |
| 43  | 13 | 81,100  | 36.800 | 80,500  | 36.500 | 79,100  | 35.900 | 76,100 | 34.500 |
| 46  | 14 | 73,000  | 33.100 | 72,300  | 32.800 | 71,700  | 32.500 | 70,300 | 31.900 |
| 53  | 16 | 60,200  | 27.300 | 59,500  | 27.000 | 58,900  | 26.700 | 58,200 | 26.400 |
| 59  | 18 | 50,700  | 23.000 | 49,800  | 22.600 | 49,200  | 22.300 | 48,500 | 22.000 |
| 66  | 20 | 43,200  | 19.600 | 42,500  | 19.300 | 41,700  | 18.900 | 41,000 | 18.600 |
| 72  | 22 | 37,300  | 16.900 | 36,600  | 16.600 | 35,700  | 16.200 | 35,100 | 15.900 |
| 79  | 24 | 32,400  | 14.700 | 31,700  | 14.400 | 31,100  | 14.100 | 30,200 | 13.700 |
| 85  | 26 | 28,400  | 12.900 | 27,800  | 12.600 | 26,900  | 12.200 | 26,200 | 11.900 |
| 92  | 28 | 25,100  | 11.400 | 24,300  | 11.000 | 23,600  | 10.700 | 22,700 | 10.300 |
| 98  | 30 | 22,000  | 10.000 | 21,400  | 9.700  | 20,700  | 9.400  | 19,800 | 9.000  |
| 105 | 32 | 19,600  | 8.900  | 19,000  | 8.600  | 18,100  | 8.200  | 17,400 | 7.900  |
| 112 | 34 | 17,400  | 7.900  | 16,800  | 7.600  | 15,900  | 7.200  | 15,200 | 6.900  |
| 118 | 36 | -       | -      | 14,800  | 6.700  | 13,900  | 6.300  | 13,200 | 6.000  |
| 125 | 38 | -       | -      | 13,000  | 5.900  | 12,100  | 5.500  | 11,500 | 5.200  |
| 131 | 40 | -       | -      | 11,200  | 5.100  | 10,600  | 4.800  | 9,900  | 4.500  |
| 138 | 42 | -       | -      | -       | -      | 9,300   | 4.200  | 8,400  | 3.800  |
| 144 | 44 | -       | -      | -       | -      | 7,900   | 3.600  | 7,300  | 3.300  |
| 151 | 46 | -       | -      | -       | -      | 6,600   | 3.000  | 6,000  | 2.700  |
| 158 | 48 | -       | -      | -       | -      | -       | -      | 5,100  | 2.300  |
| 164 | 50 | -       | -      | -       | -      | -       | -      | 4,000  | 1.800  |

# Grab Mode

Capacities according to EN 474-12

## 101,400 lbs (46.000 kg) Counterweight – 0 lbs (0 kg) Carbody Counterweight

| Radius |     | 66 ft<br>20 m |        | 85 ft<br>26 m |        | 105 ft<br>32 m |        | 125 ft<br>38 m |        |
|--------|-----|---------------|--------|---------------|--------|----------------|--------|----------------|--------|
| [ft]   | [m] | [lbs]         | [kg]   | [lbs]         | [kg]   | [lbs]          | [kg]   | [lbs]          | [kg]   |
| 20     | 6   | 121,300       | 55.000 | 121,300       | 55.000 | -              | -      | -              | -      |
| 23     | 7   | 121,300       | 55.000 | 121,300       | 55.000 | 113,300        | 51.400 | 96,100         | 43.600 |
| 26     | 8   | 113,800       | 51.600 | 106,300       | 48.200 | 99,900         | 45.300 | 93,700         | 42.500 |
| 30     | 9   | 98,500        | 44.700 | 92,800        | 42.100 | 87,700         | 39.800 | 82,700         | 37.500 |
| 33     | 10  | 86,600        | 39.300 | 82,000        | 37.200 | 77,800         | 35.300 | 73,600         | 33.400 |
| 36     | 11  | 77,200        | 35.000 | 73,400        | 33.300 | 69,900         | 31.700 | 66,100         | 30.000 |
| 39     | 12  | 69,400        | 31.500 | 66,100        | 30.000 | 63,100         | 28.600 | 60,000         | 27.200 |
| 43     | 13  | 62,800        | 28.500 | 60,200        | 27.300 | 57,500         | 26.100 | 54,700         | 24.800 |
| 46     | 14  | 57,300        | 26.000 | 55,100        | 25.000 | 52,700         | 23.900 | 50,000         | 22.700 |
| 49     | 15  | 52,700        | 23.900 | 50,500        | 22.900 | 48,500         | 22.000 | 46,100         | 20.900 |
| 53     | 16  | 48,500        | 22.000 | 46,700        | 21.200 | 44,800         | 20.300 | 42,500         | 19.300 |
| 56     | 17  | 44,500        | 20.200 | 43,200        | 19.600 | 41,400         | 18.800 | 39,500         | 17.900 |
| 59     | 18  | 40,800        | 18.500 | 40,100        | 18.200 | 38,600         | 17.500 | 36,600         | 16.600 |
| 62     | 19  | 37,500        | 17.000 | 37,500        | 17.000 | 35,900         | 16.300 | 34,200         | 15.500 |
| 66     | 20  | 34,600        | 15.700 | 35,100        | 15.900 | 33,700         | 15.300 | 32,000         | 14.500 |
| 69     | 21  | -             | -      | 32,400        | 14.700 | 31,500         | 14.300 | 30,000         | 13.600 |
| 72     | 22  | -             | -      | 30,200        | 13.700 | 29,500         | 13.400 | 28,000         | 12.700 |
| 76     | 23  | -             | -      | 28,200        | 12.800 | 27,800         | 12.600 | 26,200         | 11.900 |
| 79     | 24  | -             | -      | 26,200        | 11.900 | 26,200         | 11.900 | 24,700         | 11.200 |
| 82     | 25  | -             | -      | 24,500        | 11.100 | 24,500         | 11.100 | 23,400         | 10.600 |
| 85     | 26  | -             | -      | 22,900        | 10.400 | 22,900         | 10.400 | 22,000         | 10.000 |
| 89     | 27  | -             | -      | -             | -      | 21,600         | 9.800  | 20,700         | 9.400  |
| 92     | 28  | -             | -      | -             | -      | 20,300         | 9.200  | 19,600         | 8.900  |
| 95     | 29  | -             | -      | -             | -      | 19,000         | 8.600  | 18,300         | 8.300  |
| 98     | 30  | -             | -      | -             | -      | 17,900         | 8.100  | 17,200         | 7.800  |
| 102    | 31  | -             | -      | -             | -      | 16,800         | 7.600  | 16,100         | 7.300  |
| 105    | 32  | -             | -      | -             | -      | 15,700         | 7.100  | 15,200         | 6.900  |
| 108    | 33  | -             | -      | -             | -      | -              | -      | 14,300         | 6.500  |
| 112    | 34  | -             | -      | -             | -      | -              | -      | 13,400         | 6.100  |
| 115    | 35  | -             | -      | -             | -      | -              | -      | 12,600         | 5.700  |
| 118    | 36  | -             | -      | -             | -      | -              | -      | 11,700         | 5.300  |
| 121    | 37  | -             | -      | -             | -      | -              | -      | 11,000         | 5.000  |
| 125    | 38  | -             | -      | -             | -      | -              | -      | 10,400         | 4.700  |

# Features

---

The PLM 1300 HD is equipped with the following features:

## Safety

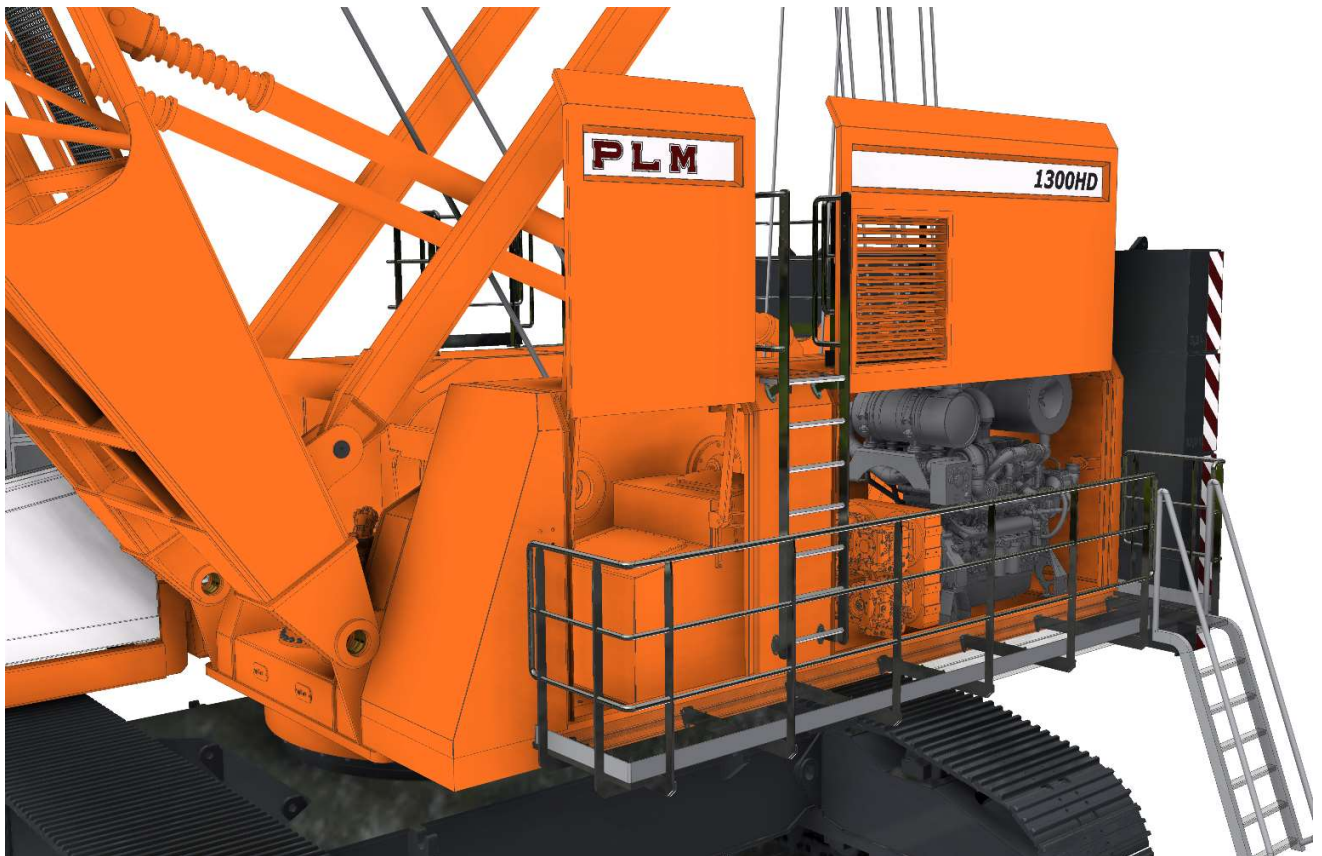
---

- LMI (Load Moment Indicator)
- ATB (Anti-two block) system

## Maintenance

---

- Automatic Lubrication System; Lincoln
- 4 Large access doors to machinery housing that can be opened hydraulically.



- Totally enclosed machinery housing
- Environmentally safe oil tight machinery space floor that can contain all hydraulic fluid in case of leaking
- Drains in the bottom of the machinery space floors to drain oil / water.

## Comfort

---

- Camera System with camera on winches, zoom camera in boom tip and 9" display; Orlaco

# Features

---

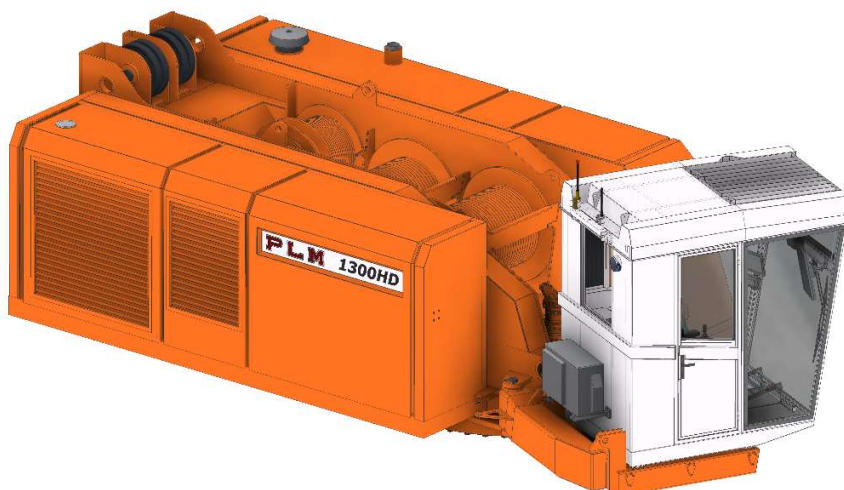
## Cabin

---

- Spacious 63" (1600 mm) wide.
- Camera System with camera on winches, zoom camera in boom tip and 9" display; Orlaco
- Air-conditioning unit (24 VDC)
- Tiltable (hydraulic) for a better view of the load during lifting operation (tilting angle 20°)



- Rotatable cabin (foundation) to keep the cabin within the width of the superstructure for transport



## Equipment

---

- WLL 55 tons (110,200 lbs) lifting block; single hook / 1-sheave

# Options

---

The following options are available for the PLM 1300 HD:

## Superstructure

---

- (Controlled) freefall grab winches, holding and closing winch linepull 66,000 lbs. (30,000 kg)
- Front grab winch as dragwinch (controlled freefall) with 77,200 lbs. (35,000 kg) linepull and fairlead
- Auxiliary hoist winch mounted in boom foot; linepull 13,200 lbs. (6,000 kg)
- Tagline winch with increased linepull; 15,400 lbs. (7,000 kg)
- Silent-pack on air in- and outlet
- Cold weather pack; hydraulic tank heating, machinery space heating and louvres on air in- and outlet.
- 20 kVA 110VAC 60Hz Diesel generator with silent pack (o.a. required for cold weather pack)
- 20 kVA 110VAC 60Hz hydraulic generator (operational with running main engine only)
- 12" Orloco camera display
- Climate control in operators cabin
- 110 VAC split-unit air-conditioning
- Overpressure unit 24 VDC

## Undercarriage

---

- Jack-up system; 4 hydraulic cylinders on carbody

## Boom

---

- Extra wide walkway on top of boom; width 3.3 ft. (1000 mm), (standard 2 ft. /600 mm)
- Monkey for electric cable for dropball operation
- Hydraulic hose reel for hydraulic grab(s)
- Auxiliary Jib, single sheave, 8.2 ft. (2,500 mm) offset, SWL 40 tons (36,000 kg)

## Equipment

---

- WLL 176 tons (352,700 lbs) lifting block; double hook / 3-sheaves
- WLL 110 tons (220,500 lbs) lifting block; double hook / 2-sheaves
- WLL 88 tons (176,400 lbs) lifting block; single hook / 2-sheaves
- WLL 38 tons (77,200 lbs) ball weight; single hook
- 2-rope mechanical grab(s)
- Single rope hydraulic grab(s)
- Dragline bucket

## General

---

- Self-Assembly pack, including Jack-up system.

## Types

---

- The PLM 1300 HD is also available as a fully electric crane (PLM 1300 HDE), or as an electric over hydraulic machine (PLM 1300 HD-EH).
- For heavy lift operation and increased capacity the PLM 1300 HD-EC is available with reinforced boom and extendable counterweight.

